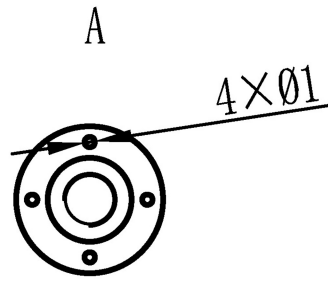


TJ-1.14/80G 型真空开关管技术参数

序号 No.	主要技术参数 Main Technical Specification	型号 Type	
		TJ-1.14/80G	
电气参数 ELECTRIC RATINGS			
1	额定电压 Rated Voltage	kV	1.14
2	额定电流 Rated current	A	80
3	额定频率 Rated frequency	Hz	50/60
4	额定短时（1分钟）工频耐受电压 Rated short-time (1min) power-frequency withstand voltage	kV	10
5	额定触头压力下的回路电阻 Circuit resistance at rated contact force	$\mu\Omega$	≤ 200
6	雷电冲击耐受电压 Lighting impulse withstand voltage	kV	18
7	额定关合能力 Rated making capacity	kA/100Times	0.96
8	额定开断能力 Rated breaking capacity	kA/25Times	0.64
9	极限开断能力 Limited breaking capacity	kA/3Times	0.8
10	额定短时耐受电流 Rated short-time withstand current	kA/10s	0.64
11	额定峰值耐受电流 Rated peak withstand current	kA	1.6
寿命 LIFE			
1	机械寿命 Mechanical life	Times	1,000,000
2	电寿命 Electrical life	Times	60,000
3	储存时间 Storage life	years	≥ 10
4	触头允许磨损厚度 Contact erosion permission length	mm	1 ± 0.2
机械数据 MECHANICAL DATA			
1	触头自闭力 Contact closing force due to bellows and atmosphere	N	12 ± 5
2	额定反力 Counterforce of contacts at full stroke	N	35 ± 10
配套的真空开关管设备应满足的机械参数 MECHANICAL DATA OF VACUUM SWITCH EQUIPPED WITH THE INTERRUPTERS			
1	触头开距 Rated contact stroke	mm	1.8 ± 0.2
2	触头接触行程 Contact connection stroke	mm	1 ± 0.2
3	平均分闸速度 Average opening speed	m/s	0.5-0.7
4	平均合闸速度 Average closing speed	m/s	0.1-0.3
5	触头合闸弹跳时间 Bounce duration of contact closing	ms	≤ 3
6	额定触头压力 Rated operation pressure of contact	N	30



A

