



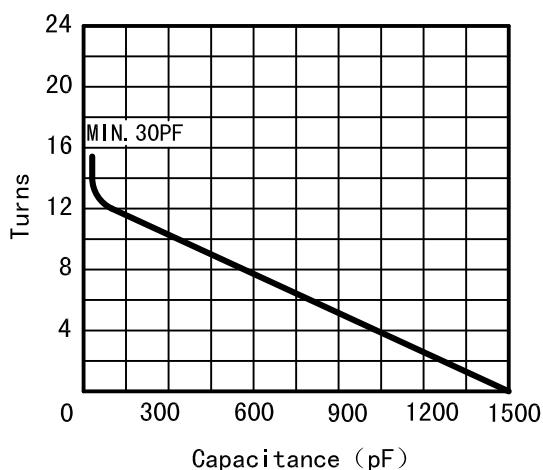
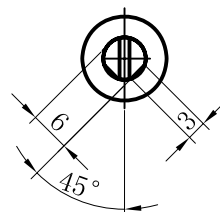
# Data-Sheet-Variable Capacitor CKTB1500/3. 5/127



www.glvac.cn

| Specification  |               |
|--|---------------|
| Capacity $C_{max}$ (nominal)                         | 1500pF        |
| Capacity $C_{min}$ (nominal)                         | 30pF          |
| Voltage (Peak Test $U_{pt}$ /Peak Working $U_{pw}$ ) | 5kV/3kV       |
| Capacity tolerance (liner Range)                     | 10%           |
| Max. Current $I_{max}$ at 13.56MHz with              | 127Arms       |
| Conduction Cooling                                   | 30W           |
| Capacitance per turn                                 | 116.7pF/turn  |
| Torque   | $\leq 0.4N.m$ |
| Net Weight   | 1.6 kg        |

VIEW S



$I_{max}$  at 25° ambient and 125° surface temp.  
for convection and conduction (30W) cooling

