



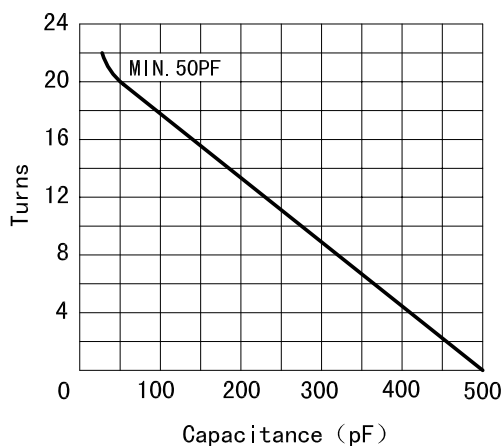
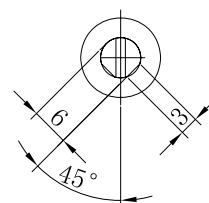
Data-Sheet-Variable Capacitor CKTB500/10/123



www.glvac.cn

Specification	
Capacity C_{max} (nominal)	500pF
Capacity C_{min} (nominal)	50pF
Voltage (Peak Test U_{pt} /Peak Working U_{pw})	15kV/9kV
Capacity tolerance (liner Range)	10%
Max. Current I_{max} at 13.56MHz with Conduction Cooling	123Arms 25W
Capacitance per turn	21.5pF/turn
Torque	$\leq 0.4N \cdot m$
Net Weight	1.4 kg

VIEW S



I_{max} at 25° ambient and 125° surface temp.
for convection and conduction (25W) cooling

